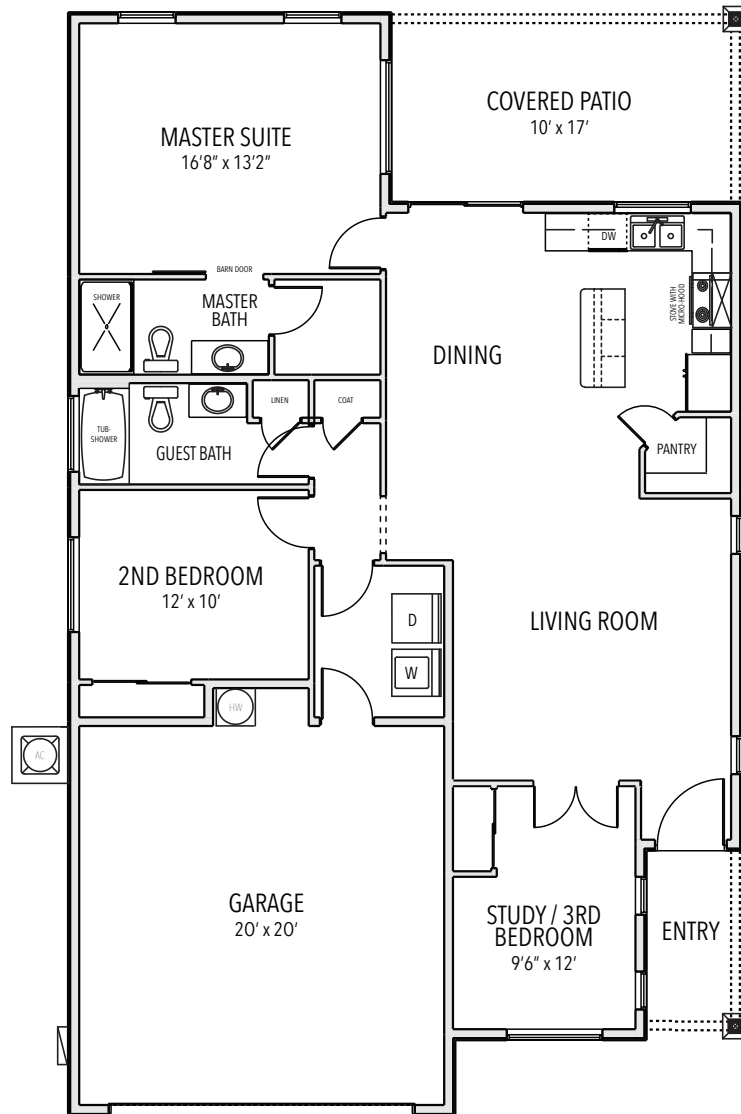


THE  
**VINEYARDS**  
AT COTTONWOOD

**AXIL - THE "BIG LITTLE HOUSE"**

The Axil contains all of the essentials - spacious bedrooms, roomy kitchen and broad patio - within a small footprint. Windows off of the kitchen and master suite were designed to capture the incredible views.



Starting from  
**\$304,000**

For marketing purposes only. Stated dimensions and square footage are approximate and should not be used as a representation of the home's precise of actual size.

**AXIL - 1343 SQ FT**

THE  
**VINEYARDS**  
 AT COTTONWOOD

Please do not hesitate to contact us directly or visit our website: [www.VineyardsCottonwood.com](http://www.VineyardsCottonwood.com)

**AXIL FRONT ELEVATION**



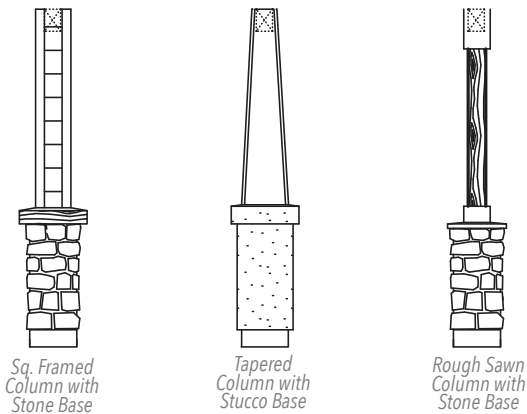
*Shown with optional stone veneer and garage door windows*

**OPTIONAL FRONT ELEVATION**



*Shown with optional stone veneer and garage door windows*

**COLUMN / POST OPTIONS**



*Sq. Framed Column with Stone Base*

*Tapered Column with Stucco Base*

*Rough Sawn Column with Stone Base*



**CODY HUDSON**

*Director of Marketing & Sales*  
 Granite Mountain Asset Mgmt, LLC

*Sales Associate*  
 Realt ONE Group Mountain Desert

t: 928.963.6689  
 e: [Cody@VineyardsCottonwood.com](mailto:Cody@VineyardsCottonwood.com)



**KENT BACKUS**

*Sales Associate*  
 Realt ONE Group Mountain Desert

t: 928.300.0204  
 e: [KentBackus0204@gmail.com](mailto:KentBackus0204@gmail.com)



**MEAGAN MULLINS**

*Sales Associate*  
 Realt ONE Group Mountain Desert

t: 928.301.9326  
 e: [MeaganJMullins@gmail.com](mailto:MeaganJMullins@gmail.com)

