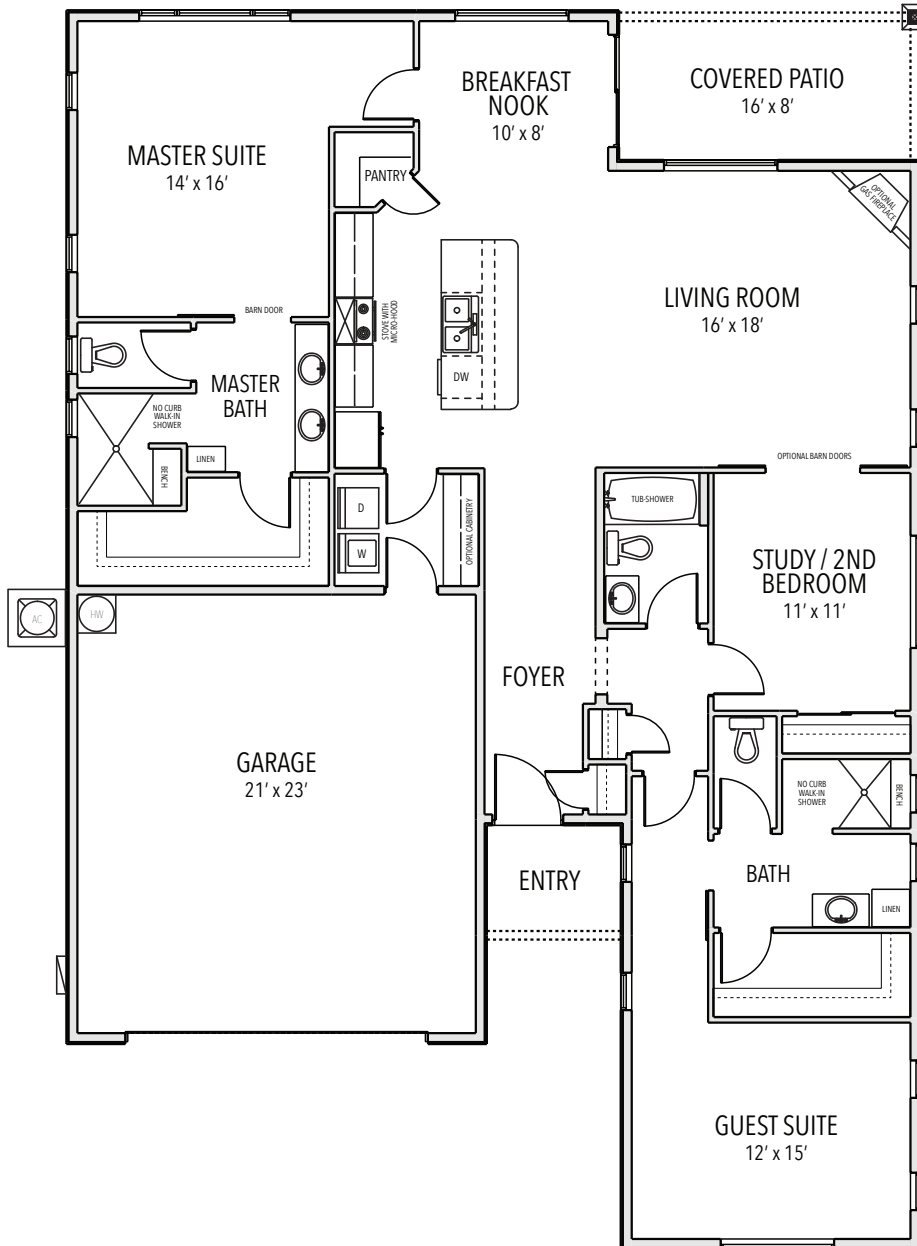


THE
VINEYARDS
 AT COTTONWOOD

SOLERA - THE "DUAL MASTER HOUSE"

The Solera was designed to take advantage of our spectacular views. The home accomodates long-term guests and family with a private guest suite, which is nicely seperated from a larger master suite. A spacious kitchen overlooks the living room, its large island ideal for gatherings or casual dining.



Starting from
\$382,000

For marketing purposes only. Stated dimensions and square footage are approximate and should not be used as a representation of the home's precise of actual size.

SOLERA - 1937 SQ FT

THE
VINEYARDS
AT COTTONWOOD

Please do not hesitate to contact us directly or visit our website: www.VineyardsCottonwood.com

SCION FRONT ELEVATION



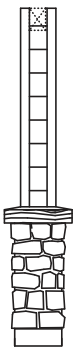
Shown with optional stone veneer and garage door windows

OPTIONAL FRONT ELEVATION



Shown with optional stone veneer and garage door windows

COLUMN / POST OPTIONS



Sq. Framed Column with Stone Base



Tapered Column with Stucco Base



Rough Sawn Column with Stone Base



CODY HUDSON

Director of Marketing & Sales
Granite Mountain Asset Mgmt, LLC

Sales Associate
Realt ONE Group Mountain Desert

t: 928.963.6689
e: Cody@VineyardsCottonwood.com



KENT BACKUS

Sales Associate
Realt ONE Group Mountain Desert

t: 928.300.0204
e: KentBackus0204@gmail.com



MEAGAN MULLINS

Sales Associate
Realt ONE Group Mountain Desert

t: 928.301.9326
e: MeaganJMullins@gmail.com